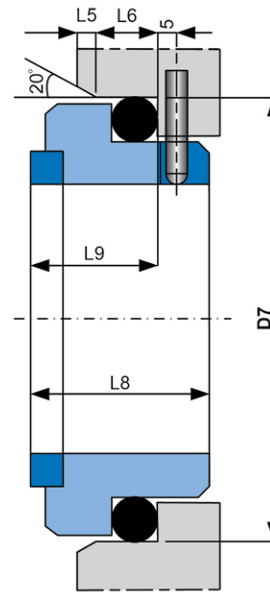
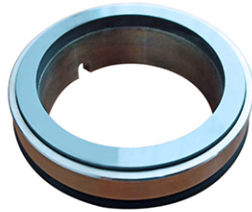


## Standard Seat Type G91

- Material : Silicon Carbide (Shink-Fit)



Dimensional Data (mm.)

D1	D7	L5	L6	L8	L9
10	21	1.5	4.0	17.5	10.0
12	23	1.5	4.0	17.5	10.0
14	25	1.5	4.0	17.5	10.0
16	27	1.5	4.0	17.5	10.0
18	33	2.0	5.0	19.5	11.5
20	35	2.0	5.0	19.5	11.5
22	37	2.0	5.0	19.5	11.5
24	39	2.0	5.0	19.5	11.5
25	40	2.0	5.0	19.5	11.5
28	43	2.0	5.0	19.5	11.5
30	45	2.0	5.0	19.5	11.5
32	48	2.0	5.0	19.5	11.5
33	48	2.0	5.0	19.5	11.5
35	50	2.0	5.0	19.5	11.5
38	56	2.0	6.0	22.0	14.0
40	58	2.0	6.0	22.0	14.0
43	61	2.0	6.0	22.0	14.0
45	63	2.0	6.0	22.0	14.0
48	66	2.0	6.0	22.0	14.0
50	70	2.5	6.0	23.0	15.0
53	73	2.5	6.0	23.0	15.0
55	75	2.5	6.0	23.0	15.0
58	78	2.5	6.0	23.0	15.0
60	80	2.5	6.0	23.0	15.0
63	83	2.5	6.0	23.0	15.0
65	85	2.5	6.0	23.0	15.0
68	90	2.5	7.0	26.0	18.0
70	92	2.5	7.0	26.0	18.0
75	97	2.5	7.0	26.0	18.0
80	105	3.0	7.0	26.2	18.2
85	110	3.0	7.0	26.2	18.2
90	115	3.0	7.0	26.2	18.2
95	120	3.0	7.0	25.2	17.2
100	125	3.0	7.0	25.2	17.2

\* Other sizes are available upon request.